

Anthophora (Anthomegilla) of the world

Pierre Rasmont*

*Lab of Zoology, University of Mons, 7000 Mons, Belgium
pierre.rasmont@umons.ac.be

First draft 9.X.2023
Published 24.III.2024

Subgenus *Anthomegilla* Marikovskaya, 1976. Type species: *Anthophora (Anthomegilla) arctica* Morawitz, 1883.

The subgenus *Anthomegilla* includes a small number of species from Central Asia and East-Palaearctic.

All species are medium sized (11-14 mm). Both sexes of *Anthomegilla* show strongly protruded clypeus and long genae. T7 of male with a longitudinal carena and two small apical projections. Genitalia show simple triangular squamae, small of nil gonostyli, simple penis valvae more or less arched, with a scythe shape.

See Brooks (1988) for a more complete description. See also Friese (1897) for historical data and Wu (2000) for detailed description of Chinese species, including genitalia illustrations.

All species are mainly living in cold areas: boreal forest, cold woody steppes and mountains. Only one species is living out of China, reaching Sakha (Yakutia) to the north, Tajikistan to the west and Anadyr to the east. All other species only occur in China.

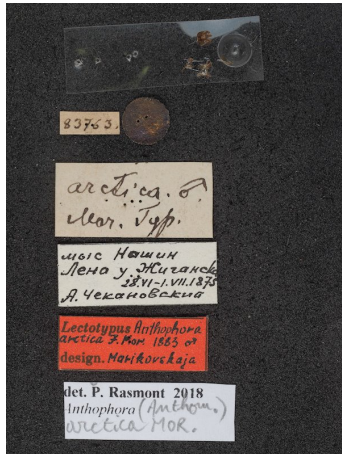
Citation:

Rasmont P. 2024. *Anthophora (Anthomegilla) of the World*. Atlas Hymenoptera, Université de Mons, Université de Liège, Belgium, <http://www.atlashymenoptera.net/old/page.aspx?id=377>

[Download PDF](#)

Anthophora arctica Morawitz, 1883

Anthophora arctica Morawitz, 1883: 33, M, F.
Lectotype M, ZISP Saint-Petersbourg, designed by Marikovskaya, 2000, revised by P. Rasmont
Paralectotype F, idem, revised by P. Rasmont
Locus typicus "Ostsibirien [...] Olenek, in der Nähe des Eismeereres gesammelt"[68°33'N 112°18'E]
Known distribution: Tajikistan, China (Xinjiang, Xizang-Tibet), Mongolia, Russia (Siberia, Baikal, Yakutia, Amur, Magadan)



Anthophora (Anthomegilla) arctica Morawitz, LECTOTYPE M
author(s): P. Rasmont
Labels
Date: 28.VI-1.VII.1875



Anthophora (Anthomegilla) arctica Morawitz, LECTOTYPE M
author(s): P. Rasmont
Scale
Date: 28.VI-1.VII.1875



Anthophora (Anthomegilla) arctica Morawitz, LECTOTYPE M
author(s): P. Rasmont
Back
Date: 28.VI-1.VII.1875



Anthophora (Anthomegilla) arctica Morawitz, LECTOTYPE M
author(s): P. Rasmont
Right profile
Date: 28.VI-1.VII.1875



Anthophora (Anthomegilla) arctica Morawitz, LECTOTYPE M
author(s): P. Rasmont
Left profile
Date: 28.VI-1.VII.1875



Anthophora (Anthomegilla) arctica Morawitz, LECTOTYPE M
author(s): P. Rasmont
Abdomen
Date: 28.VI-1.VII.1875



Anthophora (Anthomegilla) arctica Morawitz, LECTOTYPE M
author(s): P. Rasmont
Right cheek
Date: 28.VI-1.VII.1875



Anthophora (Anthomegilla) arctica Morawitz, LECTOTYPE M
author(s): P. Rasmont
Left cheek
Date: 28.VI-1.VII.1875



Anthophora (Anthomegilla) arctica Morawitz, LECTOTYPE M
author(s): P. Rasmont
Face
Date: 28.VI-1.VII.1875



Anthophora (Anthomegilla) arctica Morawitz, LECTOTYPE M
author(s): P. Rasmont
Clypeus
Date: 28.VI-1.VII.1875



Anthophora (Anthomegilla) arctica Morawitz, LECTOTYPE M
author(s): P. Rasmont
Labrum
Date: 28.VI-1.VII.1875



Anthophora (Anthomegilla) arctica Morawitz, LECTOTYPE M
author(s): P. Rasmont
Antenna
Date: 28.VI-1.VII.1875



Anthophora (Anthomegilla) arctica Morawitz, LECTOTYPE M
author(s): P. Rasmont
Legs
Date: 28.VI-1.VII.1875



Anthophora (Anthomegilla) arctica Morawitz, LECTOTYPE M
author(s): P. Rasmont
Pygidial area
Date: 28.VI-1.VII.1875



Anthophora (Anthomegilla) arctica Morawitz, LECTOTYPE M
author(s): P. Rasmont
Genitalia
Date: 28.VI-1.VII.1875



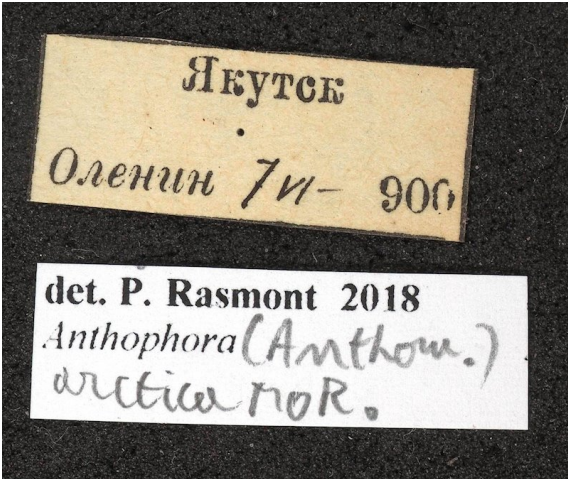
Anthophora (Anthomegilla) arctica Morawitz, LECTOTYPE M
author(s): P. Rasmont
Genitalia profile
Date: 28.VI-1.VII.1875



Anthophora (Anthomegilla) arctica Morawitz, LECTOTYPE M
author(s): P. Rasmont
Sternite 8
Date: 28.VI-1.VII.1875



Anthophora (Anthomegilla) arctica Morawitz, LECTOTYPE M
author(s): P. Rasmont
Sternite 7
Date: 28.VI-1.VII.1875



Anthophora (Anthomegilla) arctica Morawitz, F
author(s): P. Rasmont
Labels
Date: 7.VI.1906



Anthophora (Anthomegilla) arctica Morawitz, F
author(s): P. Rasmont
Scale
Date: 7.VI.1906



Anthophora (Anthomegilla) arctica Morawitz, F
author(s): P. Rasmont
Back
Date: 7.VI.1906



Anthophora (Anthomegilla) arctica Morawitz, F
author(s): P. Rasmont
Back
Date: 7.VI.1906



Anthophora (Anthomegilla) arctica Morawitz, F
author(s): P. Rasmont
Right profile
Date: 7.VI.1906



Anthophora (Anthomegilla) arctica Morawitz, F
author(s): P. Rasmont
Left profile
Date: 7.VI.1906



Anthophora (Anthomegilla) arctica Morawitz, F
author(s): P. Rasmont
Abdomen
Date: 7.VI.1906



Anthophora (Anthomegilla) arctica Morawitz, F
author(s): P. Rasmont
Right cheek
Date: 7.VI.1906



Anthophora (Anthomegilla) arctica Morawitz, F
author(s): P. Rasmont
Face
Date: 7.VI.1906



Anthophora (Anthomegilla) arctica Morawitz, F
author(s): P. Rasmont
Clypeus
Date: 7.VI.1906



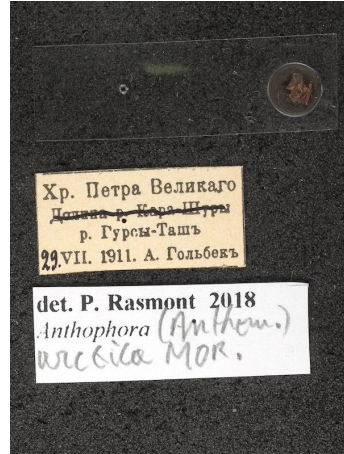
Anthophora (Anthomegilla) arctica Morawitz, F
author(s): P. Rasmont
Labrum
Date: 7.VI.1906



Anthophora (Anthomegilla) arctica Morawitz, F
author(s): P. Rasmont
Antenna
Date: 7.VI.1906



Anthophora (Anthomegilla) arctica Morawitz, F
author(s): P. Rasmont
Pygidial area
Date: 7.VI.1906



Anthophora (Anthomegilla) arctica Morawitz, M
author(s): P. Rasmont
Labels
Date: 29.VII.1911



Anthophora (Anthomegilla) arctica Morawitz, M
author(s): P. Rasmont
Scale
Date: 29.VII.1911



Anthophora (Anthomegilla) arctica Morawitz, M
author(s): P. Rasmont
Back
Date: 29.VII.1911



Anthophora (Anthomegilla) arctica Morawitz, M
author(s): P. Rasmont
Right profile
Date: 29.VII.1911



Anthophora (Anthomegilla) arctica Morawitz, M
author(s): P. Rasmont
Left profile
Date: 29.VII.1911



Anthophora (Anthomegilla) arctica Morawitz, M
author(s): P. Rasmont
Abdomen
Date: 29.VII.1911



Anthophora (Anthomegilla) arctica Morawitz, M
author(s): P. Rasmont
Legs
Date: 29.VII.1911



Anthophora (Anthomegilla) arctica Morawitz, M
author(s): P. Rasmont
Left cheek
Date: 29.VII.1911



Anthophora (Anthomegilla) arctica Morawitz, M
author(s): P. Rasmont
Face
Date: 29.VII.1911



Anthophora (Anthomegilla) arctica Morawitz, M
author(s): P. Rasmont
Clypeus
Date: 29.VII.1911



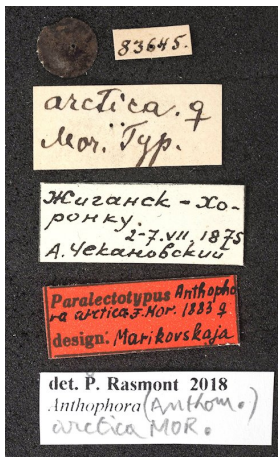
Anthophora (Anthomegilla) arctica Morawitz, M
author(s): P. Rasmont
Labrum
Date: 29.VII.1911



Anthophora (Anthomegilla) arctica Morawitz, M
author(s): P. Rasmont
Antenna
Date: 29.VII.1911



Anthophora (Anthomegilla) arctica Morawitz, M
author(s): P. Rasmont
Pygidial area
Date: 29.VII.1911



Anthophora (Anthomegilla) arctica Morawitz, PARALECTOTYPE F
author(s): P. Rasmont
Labels
Date: 2.-7.VII.1875



Anthophora (Anthomegilla) arctica Morawitz, PARALECTOTYPE F
author(s): P. Rasmont
Scale
Date: 2.-7.VII.1875



Anthophora (Anthomegilla) arctica Morawitz, PARALECTOTYPE F
author(s): P. Rasmont
Back
Date: 2.-7.VII.1875



Anthophora (Anthomegilla) arctica Morawitz, PARALECTOTYPE F
author(s): P. Rasmont
Right profile
Date: 2.-7.VII.1875



Anthophora (Anthomegilla) arctica Morawitz, PARALECTOTYPE F
author(s): P. Rasmont
Left profile
Date: 2.-7.VII.1875



Anthophora (Anthomegilla) arctica Morawitz, PARALECTOTYPE F
author(s): P. Rasmont
Abdomen
Date: 2.-7.VII.1875



Anthophora (Anthomegilla) arctica Morawitz, PARALECTOTYPE F
author(s): P. Rasmont
Left cheek
Date: 2.-7.VII.1875



Anthophora (Anthomegilla) arctica Morawitz, PARALECTOTYPE F
author(s): P. Rasmont
Right cheek
Date: 2.-7.VII.1875



Anthophora (Anthomegilla) arctica Morawitz, PARAELECTOTYPE F
author(s): P. Rasmont
Face
Date: 2.-7.VII.1875



Anthophora (Anthomegilla) arctica Morawitz, PARAELECTOTYPE F
author(s): P. Rasmont
Clypeus
Date: 2.-7.VII.1875



Anthophora (Anthomegilla) arctica Morawitz, PARAELECTOTYPE F
author(s): P. Rasmont
Labrum
Date: 2.-7.VII.1875



Anthophora (Anthomegilla) arctica Morawitz, PARAELECTOTYPE F
author(s): P. Rasmont
Antenna
Date: 2.-7.VII.1875

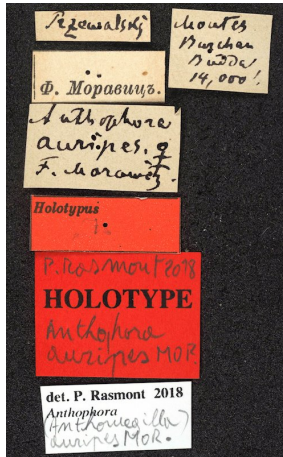


Anthophora (Anthomegilla) arctica Morawitz, PARAELECTOTYPE F
author(s): P. Rasmont
Pygidial area
Date: 2.-7.VII.1875

***Anthophora auripes* Morawitz, 1887**

Anthophora auripes Morawitz, 1887: 207, F.
Holotype F, ZISP, Saint-Petersbourg, (revised by P. Rasmont), M undescribed.

Locus typicus "Im Burchan-Budda-Gebirge nur dieses Weibchen gefangen" [China, 35°50'N 97°10'E]
Known distribution: only known from its locus typicus, China, Qinghai.



Anthophora (Anthomegilla) auripes Morawitz, F HOLOTYPE
author(s): P. Rasmont
Labels



Anthophora (Anthomegilla) auripes Morawitz, F HOLOTYPE
author(s): P. Rasmont
Scale



Anthophora (Anthomegilla) auripes Morawitz, F HOLOTYPE
author(s): P. Rasmont
Back



Anthophora (Anthomegilla) auripes Morawitz, F HOLOTYPE
author(s): P. Rasmont
Right profile



Anthophora (Anthomegilla) auripes Morawitz, F HOLOTYPE
author(s): P. Rasmont
Left profile



Anthophora (Anthomegilla) auripes Morawitz, F HOLOTYPE
author(s): P. Rasmont
Abdomen



Anthophora (Anthomegilla) auripes Morawitz, F HOLOTYPE
author(s): P. Rasmont
Left cheek



Anthophora (Anthomegilla) auripes Morawitz, F HOLOTYPE
author(s): P. Rasmont
Right cheek



Anthophora (Anthomegilla) auripes Morawitz, F HOLOTYPE
author(s): P. Rasmont
Face



Anthophora (Anthomegilla) auripes Morawitz, F HOLOTYPE
author(s): P. Rasmont
Clypeus



Anthophora (Anthomegilla) auripes Morawitz, F HOLOTYPE
author(s): P. Rasmont
Labrum



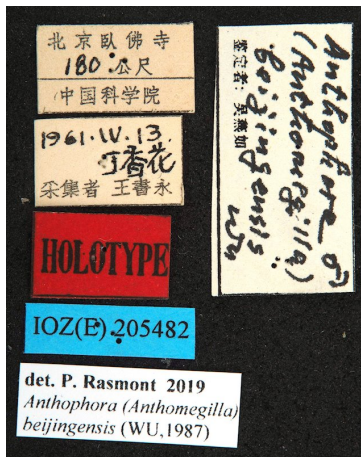
Anthophora (Anthomegilla) auripes Morawitz, F HOLOTYPE
author(s): P. Rasmont
Antenna



Anthophora (Anthomegilla) auripes Morawitz, F HOLOTYPE
author(s): P. Rasmont
Pygidial area

***Anthophora beijingensis* (Wu, 1986)**

=*Anthomegilla beijingensis* Wu, 1986: 210
Holotype M, IOZ Beijing, revised by P. Rasmont
Locus typicus: Beijing



Anthophora (Anthomegilla) beijingensis (Wu), M Holotype
author(s): P. Rasmont
Labels
Date: 13.IV.1961



Anthophora (Anthomegilla) beijingensis (Wu), M Holotype
author(s): P. Rasmont
Scale
Date: 13.IV.1961



Anthophora (Anthomegilla) beijingensis (Wu), M Holotype
author(s): P. Rasmont
Back
Date: 13.IV.1961



Anthophora (Anthomegilla) beijingensis (Wu), M Holotype
author(s): P. Rasmont
Left profile
Date: 13.IV.1961



Anthophora (Anthomegilla) beijingensis (Wu), M Holotype
author(s): P. Rasmont
Right profile
Date: 13.IV.1961



Anthophora (Anthomegilla) beijingensis (Wu), M Holotype
author(s): P. Rasmont
abdomen
Date: 13.IV.1961



Anthophora (Anthomegilla) beijingensis (Wu), M Holotype
author(s): P. Rasmont
Left hind leg
Date: 13.IV.1961



Anthophora (Anthomegilla) beijingensis (Wu), M Holotype
author(s): P. Rasmont
Left hind and right legs
Date: 13.IV.1961



Anthophora (Anthomegilla) beijingensis (Wu), M Holotype
author(s): P. Rasmont
Left cheek
Date: 13.IV.1961



Anthophora (Anthomegilla) beijingensis (Wu), M Holotype
author(s): P. Rasmont
Right cheek
Date: 13.IV.1961



Anthophora (Anthomegilla) beijingensis (Wu), M Holotype
author(s): P. Rasmont
Face
Date: 13.IV.1961



Anthophora (Anthomegilla) beijingensis (Wu), M Holotype
author(s): P. Rasmont
Clypeus
Date: 13.IV.1961



Anthophora (Anthomegilla) beijingensis (Wu), M Holotype
author(s): P. Rasmont
Labrum
Date: 13.IV.1961

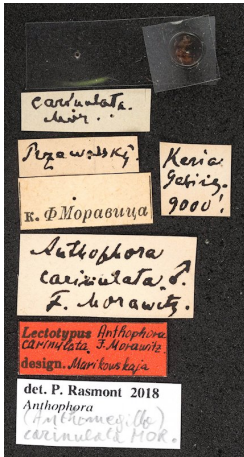


Anthophora (Anthomegilla) beijingensis (Wu), M Holotype
author(s): P. Rasmont
Antenna
Date: 13.IV.1961

***Anthophora carinulata* Morawitz, 1887**

Anthophora auripes Morawitz, 1887: 203, M, F.
Lectotype M, ZISP, Saint-Petersbourg, designated by Marikovskaya, 2000, revised by P. Rasmont

Paralectotype, 2FF, idem, revised by P. Rasmont
Locus typicus: "Keria-Gebirge" (China).



Anthophora (Anthomegilla) carinulata Morawitz, M Lectotype
author(s): P. Rasmont
Labels



Anthophora (Anthomegilla) carinulata Morawitz, M Lectotype
author(s): P. Rasmont
Scale



Anthophora (Anthomegilla) carinulata Morawitz, M Lectotype
author(s): P. Rasmont
Back



Anthophora (Anthomegilla) carinulata Morawitz, M Lectotype
author(s): P. Rasmont
Left profile



Anthophora (Anthomegilla) carinulata Morawitz, M Lectotype
author(s): P. Rasmont
Right profile



Anthophora (Anthomegilla) carinulata Morawitz, M Lectotype
author(s): P. Rasmont
Abdomen



Anthophora (Anthomegilla) carinulata Morawitz, M Lectotype
author(s): P. Rasmont
Left fore and mid legs



Anthophora (Anthomegilla) carinulata Morawitz, M Lectotype
author(s): P. Rasmont
Left Right leg



Anthophora (Anthomegilla) carinulata Morawitz, M Lectotype
author(s): P. Rasmont
Left hind leg



Anthophora (Anthomegilla) carinulata Morawitz, M Lectotype
author(s): P. Rasmont
RIGHT CHEEK



Anthophora (Anthomegilla) carinulata Morawitz, M Lectotype
author(s): P. Rasmont
Face



Anthophora (Anthomegilla) carinulata Morawitz, M Lectotype
author(s): P. Rasmont
Clypeus



Anthophora (Anthomegilla) carinulata Morawitz, M Lectotype
author(s): P. Rasmont
Labrum



Anthophora (Anthomegilla) carinulata Morawitz, M Lectotype
author(s): P. Rasmont
Antenna



Anthophora (Anthomegilla) carinulata Morawitz, M Lectotype
author(s): P. Rasmont
Pygidial area



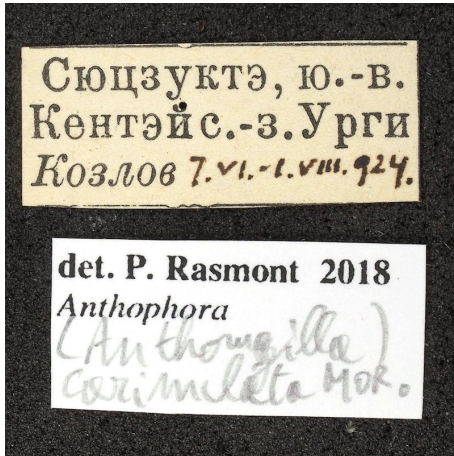
Anthophora (Anthomegilla) carinulata Morawitz, M Lectotype
author(s): P. Rasmont
Genitalia



Anthophora (Anthomegilla) carinulata Morawitz, M Lectotype
author(s): P. Rasmont
Genitalia profile



Anthophora (Anthomegilla) carinulata Morawitz, M Lectotype
author(s): P. Rasmont
Sternite 8



Anthophora (Anthomegilla) carinulata Morawitz, F non type
author(s): P. Rasmont
Labels
Date: 7.VI.-1.VIII.1924



Anthophora (Anthomegilla) carinulata Morawitz, F non type
author(s): P. Rasmont
Date: 7.VI.-1.VIII.1924



Anthophora (Anthomegilla) carinulata Morawitz, F non type
author(s): P. Rasmont
Back
Date: 7.VI.-1.VIII.1924



Anthophora (Anthomegilla) carinulata Morawitz, F non type
author(s): P. Rasmont
Left profile
Date: 7.VI.-1.VIII.1924



Anthophora (Anthomegilla) carinulata Morawitz, F non type
author(s): P. Rasmont
Right profile
Date: 7.VI.-1.VIII.1924



Anthophora (Anthomegilla) carinulata Morawitz, F non type
author(s): P. Rasmont
Abdomen
Date: 7.VI.-1.VIII.1924



Anthophora (Anthomegilla) carinulata Morawitz, F non type
author(s): P. Rasmont
Left cheek
Date: 7.VI.-1.VIII.1924



Anthophora (Anthomegilla) carinulata Morawitz, F non type
author(s): P. Rasmont
Right cheek
Date: 7.VI.-1.VIII.1924



Anthophora (Anthomegilla) carinulata Morawitz, F non type
author(s): P. Rasmont
Face
Date: 7.VI.-1.VIII.1924



Anthophora (Anthomegilla) carinulata Morawitz, F non type
author(s): P. Rasmont
Clypeus
Date: 7.VI.-1.VIII.1924



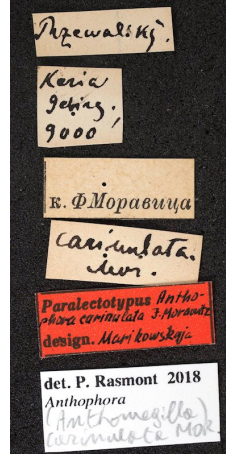
Anthophora (Anthomegilla) carinulata Morawitz, F non type
author(s): P. Rasmont
Labrum
Date: 7.VI.-1.VIII.1924



Anthophora (Anthomegilla) carinulata Morawitz, F non type
author(s): P. Rasmont
Antenna
Date: 7.VI.-1.VIII.1924



Anthophora (Anthomegilla) carinulata Morawitz, F non type
author(s): P. Rasmont
Pygidial area
Date: 7.VI.-1.VIII.1924



Anthophora (Anthomegilla) carinulata Morawitz, F Paralectotype
author(s): P. Rasmont
Labels



Anthophora (Anthomegilla) carinulata Morawitz, F Paralectotype
author(s): P. Rasmont
Scale



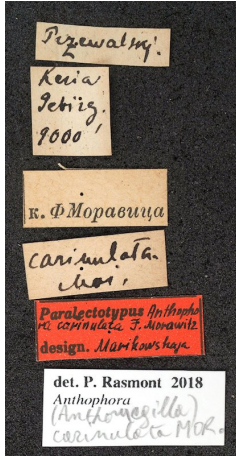
Anthophora (Anthomegilla) carinulata Morawitz, F Paralectotype
author(s): P. Rasmont
Back



Anthophora (Anthomegilla) carinulata Morawitz, F Paralectotype
author(s): P. Rasmont
Left profile



Anthophora (Anthomegilla) carinulata Morawitz, F Paralectotype
author(s): P. Rasmont
Right profile



Anthophora (Anthomegilla) carinulata Morawitz, F Paralectotype 2
author(s): P. Rasmont
Labels



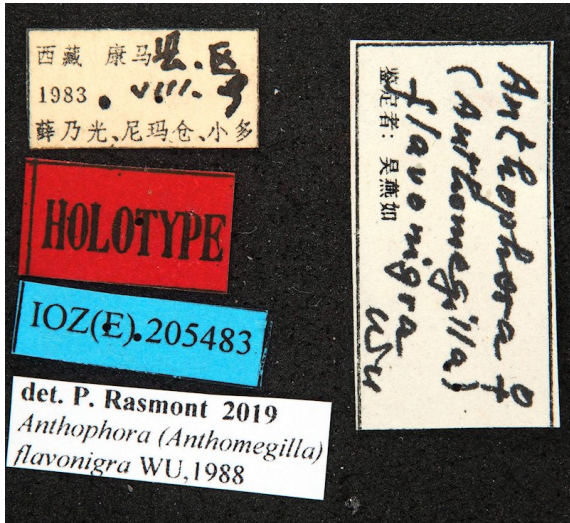
Anthophora (Anthomegilla) carinulata Morawitz, F Paralectotype 2
author(s): P. Rasmont
Scale



Anthophora (Anthomegilla) carinulata Morawitz, F Paralectotype 2
author(s): P. Rasmont
Left profile

***Anthophora flavonigra* (Wu, 1988)**

=*Anthomegilla flavonigra* Wu, 1988: 70, F. Chinese description.
Holotype F, IOZ China, revised by P. Rasmont.
Locus typicus: China, Xizang (Tibet): Kanma (28.5°N, 89°E). [=Kangmar]



Anthophora (Anthomegilla) flavonigra (Wu), F HOLOTYPE
author(s): P. Rasmont
Labels
Date: 9.VIII.1983



Anthophora (Anthomegilla) flavonigra (Wu), F HOLOTYPE
author(s): P. Rasmont
Scale
Date: 9.VIII.1983



Anthophora (Anthomegilla) flavonigra (Wu), F HOLOTYPE
author(s): P. Rasmont
Back
Date: 9.VIII.1983



Anthophora (Anthomegilla) flavonigra (Wu), F HOLOTYPE
author(s): P. Rasmont
Left profile
Date: 9.VIII.1983



Anthophora (Anthomegilla) flavonigra (Wu), F HOLOTYPE
author(s): P. Rasmont
Right profile
Date: 9.VIII.1983



Anthophora (Anthomegilla) flavonigra (Wu), F HOLOTYPE
author(s): P. Rasmont
Abdomen
Date: 9.VIII.1983



Anthophora (Anthomegilla) flavonigra (Wu), F HOLOTYPE
author(s): P. Rasmont
Legs
Date: 9.VIII.1983



Anthophora (Anthomegilla) flavonigra (Wu), F HOLOTYPE
author(s): P. Rasmont
Left cheek
Date: 9.VIII.1983



Anthophora (Anthomegilla) flavonigra (Wu), F HOLOTYPE
author(s): P. Rasmont
Right cheek
Date: 9.VIII.1983



Anthophora (Anthomegilla) flavonigra (Wu), F HOLOTYPE
author(s): P. Rasmont
Face
Date: 9.VIII.1983



Anthophora (Anthomegilla) flavonigra (Wu), F HOLOTYPE
author(s): P. Rasmont
Clypeus
Date: 9.VIII.1983



Anthophora (Anthomegilla) flavonigra (Wu), F HOLOTYPE
author(s): P. Rasmont
Labrum
Date: 9.VIII.1983



Anthophora (Anthomegilla) flavonigra (Wu), F HOLOTYPE
author(s): P. Rasmont
Antenna
Date: 9.VIII.1983



Anthophora (Anthomegilla) flavonigra (Wu), F HOLOTYPE
author(s): P. Rasmont
Pygidial area
Date: 9.VIII.1983

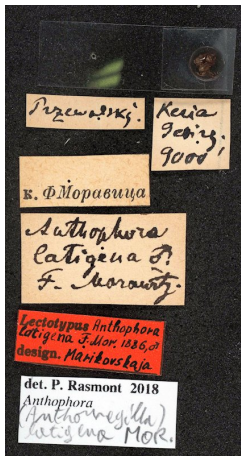
***Anthophora latigena* Morawitz, 1887**

Anthophora latigena Morawitz, 1887: 205, M. F. undescribed.

Lectotype M, ZISP, Saint-Petersbourg, designated by Marikovskaya, 2000, revised by P. Rasmont

Locus typicus: "Im Keria-Gebirge ein Exemplar gefunden" [China, 39°30'N 82°10'E].

Known distribution: only known from locus typicus, Xinjiang, China.



Anthophora (Anthomegilla) latigena Morawitz, M LECTOTYPE
author(s): P. Rasmont
Labels



Anthophora (Anthomegilla) latigena Morawitz, M LECTOTYPE
author(s): P. Rasmont
Scale



Anthophora (Anthomegilla) latigena Morawitz, M LECTOTYPE
author(s): P. Rasmont
Back



Anthophora (Anthomegilla) latigena Morawitz, M LECTOTYPE
author(s): P. Rasmont
Left profile



Anthophora (Anthomegilla) latigena Morawitz, M LECTOTYPE
author(s): P. Rasmont
Right profile



Anthophora (Anthomegilla) latigena Morawitz, M LECTOTYPE
author(s): P. Rasmont
Abdomen



Anthophora (Anthomegilla) latigena Morawitz, M LECTOTYPE
author(s): P. Rasmont
Left hind leg



Anthophora (Anthomegilla) latigena Morawitz, M LECTOTYPE
author(s): P. Rasmont
Right legs



Anthophora (Anthomegilla) latigena Morawitz, M LECTOTYPE
author(s): P. Rasmont
Left cheek



Anthophora (Anthomegilla) latigena Morawitz, M LECTOTYPE
author(s): P. Rasmont
Right cheek



Anthophora (Anthomegilla) latigena Morawitz, M LECTOTYPE
author(s): P. Rasmont
Face



Anthophora (Anthomegilla) latigena Morawitz, M LECTOTYPE
author(s): P. Rasmont
Clypeus



Anthophora (Anthomegilla) latigena Morawitz, M LECTOTYPE
author(s): P. Rasmont
Labrum



Anthophora (Anthomegilla) latigena Morawitz, M LECTOTYPE
author(s): P. Rasmont
Antenna



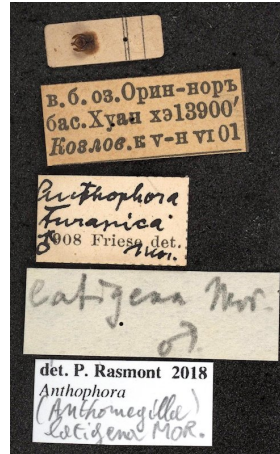
Anthophora (Anthomegilla) latigena Morawitz, M LECTOTYPE
author(s): P. Rasmont
Genitalia



Anthophora (Anthomegilla) latigena Morawitz, M LECTOTYPE
author(s): P. Rasmont
Sternite 7



Anthophora (Anthomegilla) latigena Morawitz, M LECTOTYPE
author(s): P. Rasmont
Sternite 8



Anthophora (Anthomegilla) latigena Morawitz, M
author(s): P. Rasmont
Labels
Date: VI.1901



Anthophora (Anthomegilla) latigena Morawitz, M
author(s): P. Rasmont
Scale
Date: VI.1901



Anthophora (Anthomegilla) latigena Morawitz, M
author(s): P. Rasmont
Left profile
Date: VI.1901



Anthophora (Anthomegilla) latigena Morawitz, M
author(s): P. Rasmont
Right profile
Date: VI.1901



Anthophora (Anthomegilla) latigena Morawitz, M
author(s): P. Rasmont
Face
Date: VI.1901



Anthophora (Anthomegilla) latigena Morawitz, M
author(s): P. Rasmont
Antenna
Date: VI.1901



Anthophora (Anthomegilla) latigena Morawitz, M
author(s): P. Rasmont
Genitalia
Date: VI.1901

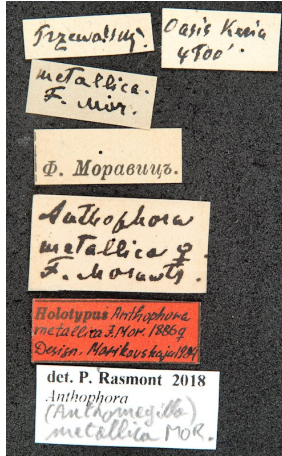
***Anthophora metallica* Morawitz, 1887**

Anthophora metallica Morawitz, 1887: 208, F. M undescribed.

Lectotype M, ZISP, Saint-Petersbourg, designated by Marikovskaya, 2000, revised by P. Rasmont

Locus typicus: "In der Oasis Keria nur dieses Exemplar gefangen" [China, 39°30'N 82°10'E].

Known distribution: only known from locus tyicus, Xinjang, China.



Anthophora (Anthomegilla) metallica Morawitz, M LECTOTYPE
author(s): P. Rasmont
Labels



Anthophora (Anthomegilla) metallica Morawitz, M LECTOTYPE
author(s): P. Rasmont
Scale



Anthophora (Anthomegilla) metallica Morawitz, M LECTOTYPE
author(s): P. Rasmont
Left profile



Anthophora (Anthomegilla) metallica Morawitz, M LECTOTYPE
author(s): P. Rasmont
Right profile



Anthophora (Anthomegilla) metallica Morawitz, M LECTOTYPE
author(s): P. Rasmont
Abdomen



Anthophora (Anthomegilla) metallica Morawitz, M LECTOTYPE
author(s): P. Rasmont
Right legs



Anthophora (Anthomegilla) metallica Morawitz, M LECTOTYPE
author(s): P. Rasmont
Left cheek



Anthophora (Anthomegilla) metallica Morawitz, M LECTOTYPE
author(s): P. Rasmont
Face



Anthophora (Anthomegilla) metallica Morawitz, M LECTOTYPE
author(s): P. Rasmont
Clypeus



Anthophora (Anthomegilla) metallica Morawitz, M LECTOTYPE
author(s): P. Rasmont
Labrum



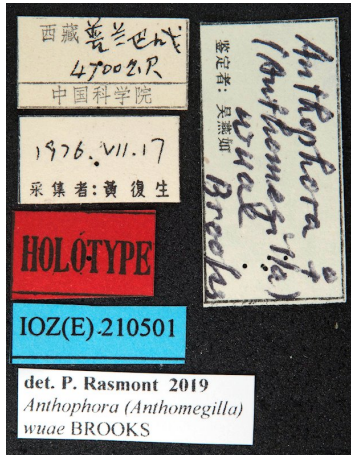
Anthophora (Anthomegilla) metallica Morawitz, M LECTOTYPE
author(s): P. Rasmont
Pygidial area

***Anthophora wuae* Brooks, 1988**

=*Anthomegilla sinensis* Wu, 1982: 412, F, M. Chinese description.
=*Anthomegilla sinensis* Wu, 1982: 425, F, M, emendation, English description.
=*Anthophora (Anthomegilla) beijingensis* Brooks, 1988: 575 nomen novum pro *Anthomegilla sinensis* Wu, 1982 nec *Anthophora sinensis* Alfken, 1937 (recte *Habropoda sinensis* (Alfken)).

Holotype F, IOZ China, revised by P. Rasmont.
Paratype 9 MM, IOZ China, revised by P. Rasmont
After Z-Q Niu (pers.com.), the paratype M #2 does not belong to *A. wuae* but to *A. arctica*.

Locus typicus: Xizang=Tibet (China).



Anthophora (Anthomegilla) wuae Brooks, F HOLOTYPE
author(s): P. Rasmont
Labels
Date: 17.VII.1976



Anthophora (Anthomegilla) wuae Brooks, F HOLOTYPE
author(s): P. Rasmont
Scale
Date: 17.VII.1976



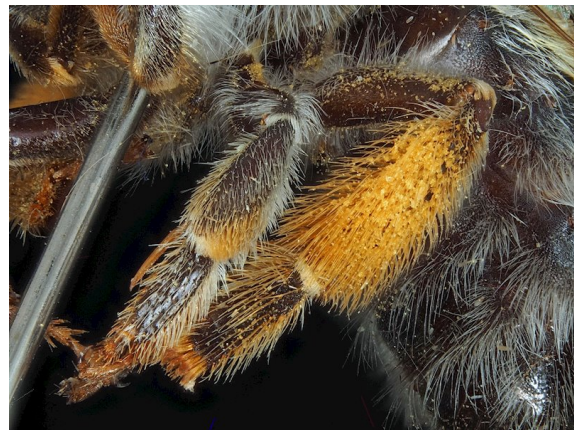
Anthophora (Anthomegilla) wuae Brooks, F HOLOTYPE
author(s): P. Rasmont
Back
Date: 17.VII.1976



Anthophora (Anthomegilla) wuae Brooks, F HOLOTYPE
author(s): P. Rasmont
Left profile
Date: 17.VII.1976



Anthophora (Anthomegilla) wuae Brooks, F HOLOTYPE
author(s): P. Rasmont
Abdomen
Date: 17.VII.1976



Anthophora (Anthomegilla) wuae Brooks, F HOLOTYPE
author(s): P. Rasmont
Left legs
Date: 17.VII.1976



Anthophora (Anthomegilla) wuae Brooks, F HOLOTYPE
author(s): P. Rasmont
Left cheek
Date: 17.VII.1976



Anthophora (Anthomegilla) wuae Brooks, F HOLOTYPE
author(s): P. Rasmont
Right cheek
Date: 17.VII.1976



Anthophora (Anthomegilla) wuae Brooks, F HOLOTYPE
author(s): P. Rasmont
Face
Date: 17.VII.1976



Anthophora (Anthomegilla) wuae Brooks, F HOLOTYPE²
author(s): P. Rasmont
Clypeus
Date: 17.VII.1976



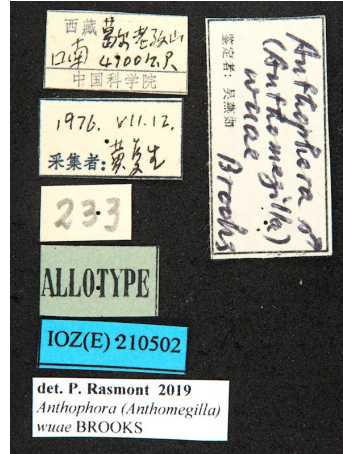
Anthophora (Anthomegilla) wuae Brooks, F HOLOTYPE
author(s): P. Rasmont
Labrum
Date: 17.VII.1976



Anthophora (Anthomegilla) wuae Brooks, F HOLOTYPE
author(s): P. Rasmont
Antenna
Date: 17.VII.1976



Anthophora (Anthomegilla) wuae Brooks, F HOLOTYPE
author(s): P. Rasmont
Pygidial area
Date: 17.VII.1976



Anthophora (Anthomegilla) wuae Brooks, M PARATYPE 1 (ALLOTYPE)
author(s): P. Rasmont
Labels
Date: 12.VII.1976



Anthophora (Anthomegilla) wuae Brooks, M PARATYPE 1 (ALLOTYPE)
author(s): P. Rasmont
Scale
Date: 12.VII.1976



Anthophora (Anthomegilla) wuae Brooks, M PARATYPE 1 (ALLOTYPE)
author(s): P. Rasmont
Back
Date: 12.VII.1976



Anthophora (Anthomegilla) wuae Brooks, M PARATYPE 1 (ALLOTYPE)
author(s): P. Rasmont
Left profile
Date: 12.VII.1976



Anthophora (Anthomegilla) wuae Brooks, M PARATYPE 1 (ALLOTYPE)
author(s): P. Rasmont
Right profile
Date: 12.VII.1976



Anthophora (Anthomegilla) wuae Brooks, M PARATYPE 1 (ALLOTYPE)
author(s): P. Rasmont
Abdomen
Date: 12.VII.1976



Anthophora (Anthomegilla) wuae Brooks, M PARATYPE 1 (ALLOTYPE)
author(s): P. Rasmont
Right legs
Date: 12.VII.1976



Anthophora (Anthomegilla) wuae Brooks, M PARATYPE 1 (ALLOTYPE)
author(s): P. Rasmont
Left legs
Date: 12.VII.1976



Anthophora (Anthomegilla) wuae Brooks, M PARATYPE 1 (ALLOTYPE)
author(s): P. Rasmont
Left cheek
Date: 12.VII.1976



Anthophora (Anthomegilla) wuae Brooks, M PARATYPE 1 (ALLOTYPE)
author(s): P. Rasmont
Right cheek
Date: 12.VII.1976



Anthophora (Anthomegilla) wuae Brooks, M PARATYPE 1 (ALLOTYPE)
author(s): P. Rasmont
Face
Date: 12.VII.1976



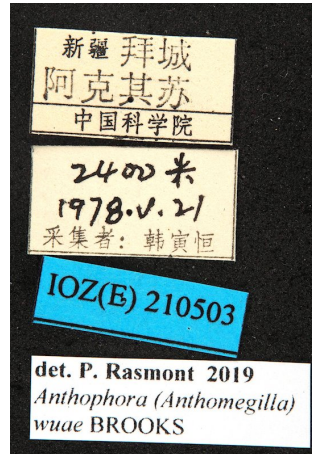
Anthophora (Anthomegilla) wuae Brooks, M PARATYPE 1 (ALLOTYPE)
author(s): P. Rasmont
Clypeus
Date: 12.VII.1976



Anthophora (Anthomegilla) wuae Brooks, M PARATYPE 1 (ALLOTYPE)
author(s): P. Rasmont
Labrum
Date: 12.VII.1976



Anthophora (Anthomegilla) wuae Brooks, M PARATYPE 1 (ALLOTYPE)
author(s): P. Rasmont
Antenna
Date: 12.VII.1976



Anthophora (Anthomegilla) wuae Brooks, M PARATYPE 2, recte A. arctica
author(s): P. Rasmont
Labels. After Z-Q Niu (com.pers.) this specimen does not belong to *A. wuae* [=sinensis (Wu)] but to *A. arctica* Morawitz
Date: 21.V.1978



Anthophora (Anthomegilla) wuae Brooks, M PARATYPE 2, recte A. arctica
author(s): P. Rasmont
Scale. After Z-Q Niu (com.pers.) this specimen does not belong to *A. wuae* [=sinensis (Wu)] but to *A. arctica* Morawitz
Date: 21.V.1978



Anthophora (Anthomegilla) wuae Brooks, M PARATYPE 2, recte A. arctica
author(s): P. Rasmont
Left profile. After Z-Q Niu (com.pers.) this specimen does not belong to *A. wuae* [=sinensis (Wu)] but to *A. arctica* Morawitz
Date: 21.V.1978



Anthophora (Anthomegilla) wuae Brooks, M PARATYPE 2, recte A. arctica
author(s): P. Rasmont
Right cheek. After Z-Q Niu (com.pers.) this specimen does not belong to A. wuae [=sinensis (Wu)] but to A. arctica Morawitz
Date: 21.V.1978



Anthophora (Anthomegilla) wuae Brooks, M PARATYPE 3
author(s): P. Rasmont
Labels
Date: 12.VII.1976



Anthophora (Anthomegilla) wuae Brooks, M PARATYPE 3
author(s): P. Rasmont
Scale
Date: 12.VII.1976



Anthophora (Anthomegilla) wuae Brooks, M PARATYPE 3
author(s): P. Rasmont
Left profile
Date: 12.VII.1976



Anthophora (Anthomegilla) wuae Brooks, M PARATYPE 3
author(s): P. Rasmont
Legs
Date: 12.VII.1976



Anthophora (Anthomegilla) wuae Brooks, M PARATYPE 3
author(s): P. Rasmont
Right cheek
Date: 12.VII.1976



Anthophora (Anthomegilla) wuae Brooks, M PARATYPE 4
author(s): P. Rasmont
Labels
Date: 5.VII.1976



Anthophora (Anthomegilla) wuae Brooks, M PARATYPE 4
author(s): P. Rasmont
Scale
Date: 5.VII.1976



Anthophora (Anthomegilla) wuae Brooks, M PARATYPE 4
author(s): P. Rasmont
Left profile
Date: 5.VII.1976



Anthophora (Anthomegilla) wuae Brooks, M PARATYPE 4
author(s): P. Rasmont
Face
Date: 5.VII.1976



Anthophora (Anthomegilla) wuae Brooks, M PARATYPE 5
author(s): P. Rasmont
Labels
Date: 7.VIII.1976



Anthophora (Anthomegilla) wuae Brooks, M PARATYPE 5
author(s): P. Rasmont
Scale
Date: 7.VIII.1976



Anthophora (Anthomegilla) wuae Brooks, M PARATYPE 5
author(s): P. Rasmont
Left profile
Date: 7.VIII.1976



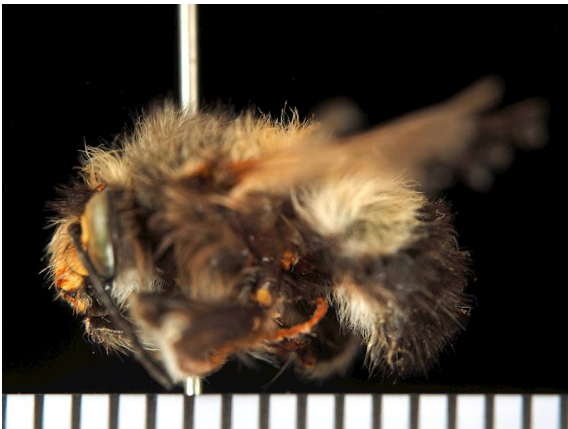
Anthophora (Anthomegilla) wuae Brooks, M PARATYPE 5
author(s): P. Rasmont
Legs
Date: 7.VIII.1976



Anthophora (Anthomegilla) wuae Brooks, M PARATYPE 5
author(s): P. Rasmont
Right cheek
Date: 7.VIII.1976



Anthophora (Anthomegilla) wuae Brooks, M PARATYPE 6
author(s): P. Rasmont
Labels
Date: 7.VIII.1976



Anthophora (Anthomegilla) wuae Brooks, M PARATYPE 6
author(s): P. Rasmont
Scale
Date: 7.VIII.1976



Anthophora (Anthomegilla) wuae Brooks, M PARATYPE 6
author(s): P. Rasmont
Left profile
Date: 7.VIII.1976



Anthophora (Anthomegilla) wuae Brooks, M PARATYPE 6
author(s): P. Rasmont
Right cheek
Date: 7.VIII.1976



Anthophora (Anthomegilla) wuae Brooks, M PARATYPE 7
author(s): P. Rasmont
Labels
Date: 2.VII.1976



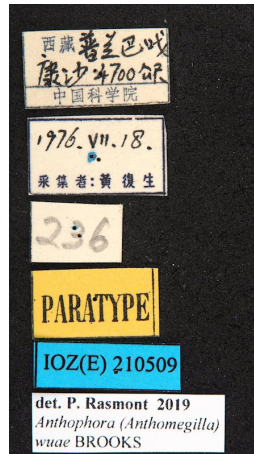
Anthophora (Anthomegilla) wuae Brooks, M PARATYPE 7
author(s): P. Rasmont
Scale
Date: 2.VII.1976



Anthophora (Anthomegilla) wuae Brooks, M PARATYPE 7
author(s): P. Rasmont
Left profile
Date: 2.VII.1976



Anthophora (Anthomegilla) wuae Brooks, M PARATYPE 7
author(s): P. Rasmont
Right cheek
Date: 2.VII.1976



Anthophora (Anthomegilla) wuae Brooks, M PARATYPE 8
author(s): P. Rasmont
Labels
Date: 18.VII.1976



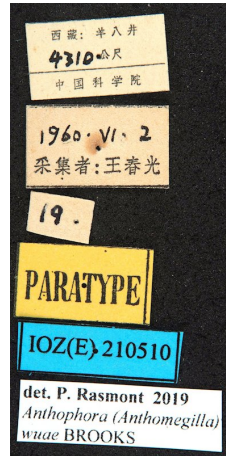
Anthophora (Anthomegilla) wuae Brooks, M PARATYPE 8
author(s): P. Rasmont
Scale
Date: 18.VII.1976



Anthophora (Anthomegilla) wuae Brooks, M PARATYPE 8
author(s): P. Rasmont
Left profile
Date: 18.VII.1976



Anthophora (Anthomegilla) wuae Brooks, M PARATYPE 8
author(s): P. Rasmont
Right cheek
Date: 18.VII.1976



Anthophora (Anthomegilla) wuae Brooks, M PARATYPE 9
author(s): P. Rasmont
Labels
Date: 2.VI.1960



Anthophora (Anthomegilla) wuae Brooks, M PARATYPE 9
author(s): P. Rasmont
Scale
Date: 2.VI.1960



Anthophora (Anthomegilla) wuae Brooks, M PARATYPE 9
author(s): P. Rasmont
Left profile
Date: 2.VI.1960



Anthophora (Anthomegilla) wuae Brooks, M PARATYPE 9
author(s): P. Rasmont
Face
Date: 2.VI.1960

***Anthophora xizangensis* (Wu, 1988)**

=*Anthomegilla xizangensis* Wu, 1988: 69, M. Chinese description.

Holotype M, IOZ China, revised by P. Rasmont.

Paratype 2 FF, IOZ China, revised by P. Rasmont.

After Z-Q Niu (com. pers.) both paratype specimens do not belong to *A. xizangensis* but to *A. wuae*, making the female of this species still undescribed.

Locus typicus: Xizang (China): Jilungzongga (28.5°N, 85.5°E).



Anthophora (Anthomegilla) xizangensis (Wu), M HOLOTYPE
author(s): P. Rasmont
Labels
Date: 30.VI.1984



Anthophora (Anthomegilla) xizangensis (Wu), M HOLOTYPE
author(s): P. Rasmont
Scale
Date: 30.VI.1984



Anthophora (Anthomegilla) xizangensis (Wu), M HOLOTYPE
author(s): P. Rasmont
Back
Date: 30.VI.1984



Anthophora (Anthomegilla) xizangensis (Wu), M HOLOTYPE
author(s): P. Rasmont
Left profile
Date: 30.VI.1984



Anthophora (Anthomegilla) xizangensis (Wu), M HOLOTYPE
author(s): P. Rasmont
Right profile
Date: 30.VI.1984



Anthophora (Anthomegilla) xizangensis (Wu), M HOLOTYPE
author(s): P. Rasmont
Abdomen (partly hidden by right wing)
Date: 30.VI.1984



Anthophora (Anthomegilla) xizangensis (Wu), M HOLOTYPE
author(s): P. Rasmont
Left legs
Date: 30.VI.1984



Anthophora (Anthomegilla) xizangensis (Wu), M HOLOTYPE
author(s): P. Rasmont
Left cheek
Date: 30.VI.1984



Anthophora (Anthomegilla) xizangensis (Wu), M HOLOTYPE
author(s): P. Rasmont
Left cheek profile
Date: 30.VI.1984



Anthophora (Anthomegilla) xizangensis (Wu), M HOLOTYPE
author(s): P. Rasmont
Face
Date: 30.VI.1984



Anthophora (Anthomegilla) xizangensis (Wu), M HOLOTYPE
author(s): P. Rasmont
Clypeus
Date: 30.VI.1984



Anthophora (Anthomegilla) xizangensis (Wu), M HOLOTYPE
author(s): P. Rasmont
Labrum
Date: 30.VI.1984



Anthophora (Anthomegilla) xizangensis (Wu), M HOLOTYPE
author(s): P. Rasmont
Antenna
Date: 30.VI.1984



Anthophora (Anthomegilla) xizangensis (Wu), M HOLOTYPE
author(s): P. Rasmont
Tergum 7, dissected and glued, showing its ventral side
Date: 30.VI.1984



Anthophora (Anthomegilla) xizangensis (Wu), M HOLOTYPE
author(s): P. Rasmont
Genitalia
Date: 30.VI.1984



Anthophora (Anthomegilla) xizangensis (Wu), M HOLOTYPE
author(s): P. Rasmont
Sternite 7
Date: 30.VI.1984



Anthophora (Anthomegilla) xizangensis (Wu), M HOLOTYPE
author(s): P. Rasmont
Sternite 8
Date: 30.VI.1984



Anthophora (Anthomegilla) xizangensis (Wu), F PARATYPE 2, recte A. wuae
author(s): P. Rasmont
Labels. After Z-Q Niu (com.pers.) this specimen does not belong to *A. xizangensis* (Wu) but to *A. wuae* Brooks
Date: 16.VIII.1976



Anthophora (Anthomegilla) xizangensis (Wu), F PARATYPE 2, recte A. wuae
author(s): P. Rasmont
Scale. After Z-Q Niu (com.pers.) this specimen does not belong to *A. xizangensis* (Wu) but to *A. wuae* Brooks
Date: 16.VIII.1976



Anthophora (Anthomegilla) xizangensis (Wu), F PARATYPE 2, recte A. wuae
author(s): P. Rasmont
Back
Date: 16.VIII.1976



Anthophora (Anthomegilla) xizangensis (Wu), F PARATYPE 2, recte A. wuae
author(s): P. Rasmont
Left profile. After Z-Q Niu (com.pers.) this specimen does not belong to A. xizangensis (Wu) but to A. wuae Brooks
Date: 16.VIII.1976



Anthophora (Anthomegilla) xizangensis (Wu), F PARATYPE 2, recte A. wuae
author(s): P. Rasmont
Right profile. After Z-Q Niu (com.pers.) this specimen does not belong to A. xizangensis (Wu) but to A. wuae Brooks
Date: 16.VIII.1976



Anthophora (Anthomegilla) xizangensis (Wu), F PARATYPE 2, recte A. wuae
author(s): P. Rasmont
Abdomen. After Z-Q Niu (com.pers.) this specimen does not belong to A. xizangensis (Wu) but to A. wuae Brooks
Date: 16.VIII.1976



Anthophora (Anthomegilla) xizangensis (Wu), F PARATYPE 2, recte A. wuae
author(s): P. Rasmont
Legs. After Z-Q Niu (com.pers.) this specimen does not belong to A. xizangensis (Wu) but to A. wuae Brooks
Date: 16.VIII.1976



Anthophora (Anthomegilla) xizangensis (Wu), F PARATYPE 2, recte A. wuae
author(s): P. Rasmont
Left cheek. After Z-Q Niu (com.pers.) this specimen does not belong to A. xizangensis (Wu) but to A. wuae Brooks
Date: 16.VIII.1976



Anthophora (Anthomegilla) xizangensis (Wu), F PARATYPE 2, recte A. wuae
author(s): P. Rasmont
Right cheek. After Z-Q Niu (com.pers.) this specimen does not belong to A. xizangensis (Wu) but to A. wuae Brooks
Date: 16.VIII.1976



Anthophora (Anthomegilla) xizangensis (Wu), F PARATYPE 2, recte A. wuae
 author(s): P. Rasmont
 Face. After Z-Q Niu (com.pers.) this specimen does not belong to A. xizangensis (Wu) but to A. wuae Brooks
 Date: 16.VIII.1976



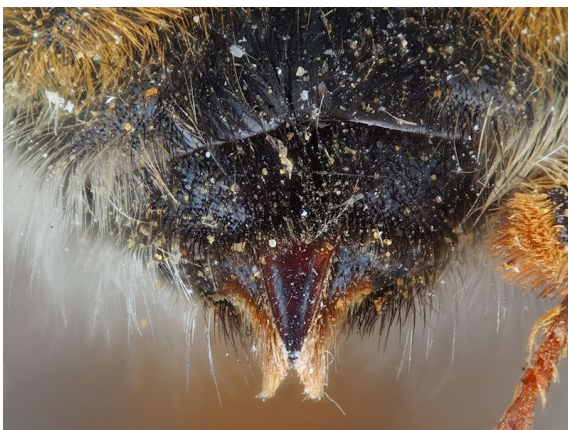
Anthophora (Anthomegilla) xizangensis (Wu), F PARATYPE 2, recte A. wuae
 author(s): P. Rasmont
 Clypeus. After Z-Q Niu (com.pers.) this specimen does not belong to A. xizangensis (Wu) but to A. wuae Brooks
 Date: 16.VIII.1976



Anthophora (Anthomegilla) xizangensis (Wu), F PARATYPE 2, recte A. wuae
 author(s): P. Rasmont
 Labrum. After Z-Q Niu (com.pers.) this specimen does not belong to A. xizangensis (Wu) but to A. wuae Brooks
 Date: 16.VIII.1976



Anthophora (Anthomegilla) xizangensis (Wu), F PARATYPE 2, recte A. wuae
 author(s): P. Rasmont
 Antenna. After Z-Q Niu (com.pers.) this specimen does not belong to A. xizangensis (Wu) but to A. wuae Brooks
 Date: 16.VIII.1976



Anthophora (Anthomegilla) xizangensis (Wu), F PARATYPE 2, recte A. wuae
 author(s): P. Rasmont
 Pygidial area. After Z-Q Niu (com.pers.) this specimen does not belong to A. xizangensis (Wu) but to A. wuae Brooks
 Date: 16.VIII.1976



Anthophora (Anthomegilla) xizangensis (Wu), F PARATYPE 1, recte A. wuae
 author(s): P. Rasmont
 Labels. After Z-Q Niu (com.pers.) this specimen does not belong to A. xizangensis (Wu) but to A. wuae Brooks
 Date: 18.VII.1976



Anthophora (Anthomegilla) xizangensis (Wu), F PARATYPE 1, recte A. wuae
author(s): P. Rasmont
Scale. After Z-Q Niu (com.pers.) this specimen does not belong to A. xizangensis (Wu) but to A. wuae Brooks
Date: 12.VII.1976



Anthophora (Anthomegilla) xizangensis (Wu), F PARATYPE 1, recte A. wuae
author(s): P. Rasmont
Back. After Z-Q Niu (com.pers.) this specimen does not belong to A. xizangensis (Wu) but to A. wuae Brooks
Date: 12.VII.1976



Anthophora (Anthomegilla) xizangensis (Wu), F PARATYPE 1, recte A. wuae
author(s): P. Rasmont
Left profile. After Z-Q Niu (com.pers.) this specimen does not belong to A. xizangensis (Wu) but to A. wuae Brooks
Date: 12.VII.1976

References

- Brooks R. W.** 1988. Systematics and phylogeny of the Anthophorine bees (Hymenoptera Anthophoridae ; Anthophorini). The university of Kansas Bulletin, 53(9) : 436-575.
- Friese H.** 1897. Die Bienen Europa's (Apidae europaeae). Theil III. Solitäre Apiden. Genus Podalirius. Friedländer & Sohn, Berlin, 316 p.
- Marikovskaya TP.** 1976. K sistematike pchelinykh triby Anthophorini (Hymenoptera, Apoidea, Anthophoridae). [On the systematics of the tribe Anthophorini (Hymenoptera, Apoidea, Anthophoridae)]. Entomologicheskoye Obozrenie 55(3): 684-690 [in Russian].
- Marikovskaya TP.** 2000. The type specimens of the species from the genus Anthophora Latr. s. lat. (Hymenoptera, Apoidea) deposited in the collection of Zoological Institute, Russian Academy of Sciences. TETHYS Entomological Research 2: 205-210 [in Russian].
- Morawitz F.** 1883. Neue ost-sibirische Anthophora-Arten. Revue Mensuelle d'Entomologie, 1:33-36.
- Morawitz F.** 1887. Insecta in itinere Cl. N. Przewalskii in Asia Centrali novissime lecta. I. Apidae. Horae Societatis Entomologicae Rossica, 20: 195-229.
- Wu Y.-R.** 1982. Hymenoptera: Apoidea. Insects of Xizang, 2: 379-426.
- Wu Y.-R.** 1986. A study on Anthomegilla from China with descriptions of two new species (Apoidea: Anthophoridae). Sinozoologia, 10(4): 209-212.
- Wu Y.-R.** 1988. Four new species of bees from China (Hymenoptera: Apoidea). Acta Zootaxonomica Sinica 13(1): 67-71.
- Wu Y.-R.** 2000. Hymenoptera, Melittidae & Apidae. Academia Sinica, Beijing, 442 pp.

Page generated automatically on <http://www.atlashymenoptera.net> - 01-04-2024